



USB 3.0 to SATA  
Hard Drive Docking Station  
Model 202019



## User Manual

*(Available in a PDF file)*

**Email: [support@cablematters.com](mailto:support@cablematters.com)**

## Table of Contents

<b>1. INTRODUCTION</b> .....	<b>1</b>
1.1 Introduction	
1.2 Copyright and Trademarks	
1.3 FCC Compliance Statement	
<b>2. PRODUCT OVERVIEW</b>	
2.1 Package Contents	
2.2 Product Description .....	<b>2</b>
2.3 Product Features	
2.4 System Requirements	
<b>3. CONNECTION AND OPERATING INSTRUCTIONS</b> .....	<b>3</b>
3.1 Panel Diagrams	
3.2 HDD Installation .....	<b>4</b>
3.3 Initializing, Formatting, or Partitioning an HDD in Windows OS ...	<b>5</b>
3.4 Initializing, Formatting, or Partitioning an HDD in Mac OS .....	<b>7</b>
3.5 Troubleshooting Notes .....	<b>8</b>
<b>4. TECHNICAL SPECIFICATIONS</b> .....	<b>9</b>
<b>5. WARRANTY AND SUPPORT</b> .....	<b>10</b>
5.1 Customer Support and Contact Information	
5.2 Warranty Information	
5.3 Limitations of Liability	

## **1. Introduction**

### **1.1 Introduction**

Thank you for your purchase from Cable Matters® Inc., the 'Reliable Connectivity' company. This User Manual provides an overview of the features and installation of your new:

#### **USB 3.0 to SATA Hard Drive Docking Station**

Please read these instructions carefully before connecting, operating or configuring this product. Please keep this manual for future reference.

Contact [support@cablematters.com](mailto:support@cablematters.com) for questions or product support.

### **1.2 Copyright and Trademarks**

Specifications are subject to change without notice. Cable Matters is a registered trademark or trademark of Cable Matters Inc. All rights reserved. All other trademarks are the property of their respective owners.

### **1.3 FCC Compliance Statement**

This device complies with Part 15 of the FCC Rules. Operation is subject to the following two conditions: 1) This device must not cause harmful interference, and 2) this device must accept any interference received, including interference that may cause undesired operation.

## **2. PRODUCT OVERVIEW**

### **2.1 Package Contents**

Please check that the following items are contained in the package:

- 1 x USB 3.0 to SATA Docking Station
- 1 x USB 3.0 Type-A to Type-B Cable
- 1 x USB 3.1 Type-C to Type-B Cable
- 1 x AC Power Adapter 12V 2A
- 1 x User Manual

## **2.2 Product Description**

The Cable Matters® USB 3.0 to SATA Hard Drive Docking Station supports 2.5" or 3.5", Hard Disk or Solid State Disk, SATA I/II/III drives without any tools or software drivers. Connect it to your computer for fast file transfers, data recovery or drive imaging at up to SuperSpeed USB 3.0 data transfer rates. This high performance HDD Dock uses external power for stable drive performance.

## **2.3 Product Features**

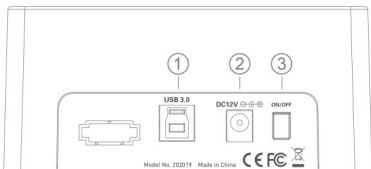
- Connect an SSD/HDD/SSHD to a computer with a USB 3.0 port
- Supports 2.5" & 3.5" SSD/HDD/SSHD hard drives
- Compatible with SATA I/II/III drives
- Lightweight Docking Station weighs less than 1 pound
- Supports SuperSpeed USB 3.0 data transfer rates up to 5Gbps
- Backwards compatible with USB 2.0 at slower transfer speeds
- UASP mode support with a UASP enabled host

## **2.4 System Requirements**

Computer	USB 3.0/2.0 or USB-C computer port
Supported OS	Windows 7, 8, 8.1, 10 Mac OS X 10.4 or higher
AC Power	Available electrical outlet within 5 feet of the Dock
SSD/HDD/SSHD	2.5 / 3.5 inch SATA I/II/III

### 3. Connection and Operating Instructions

#### 3.1 Panel Diagrams



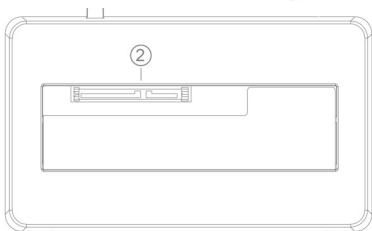
#### DOCK REAR PANEL VIEW

- 1) USB 3.0 Type-B port
- 2) DC 12v Power Adapter input
- 3) Power ON/OFF button



#### DOCK FRONT PANEL VIEW

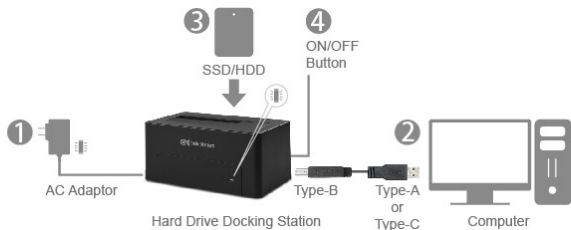
- 1) Power/Status - Blue LED



#### DOCK TOP VIEW

- 2) SATA 2.5"/3.5" Connector

### 3.2 HDD Installation



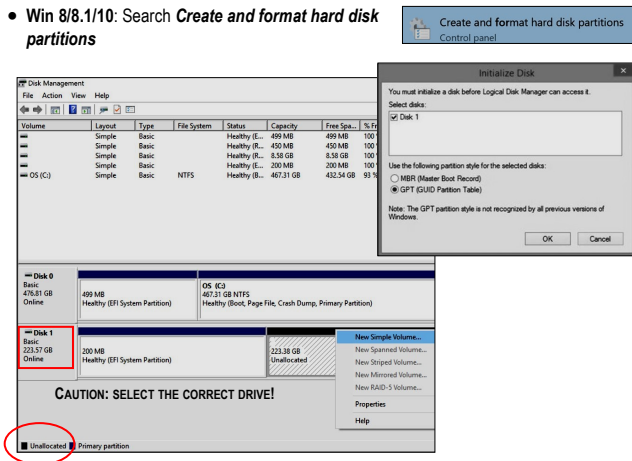
1. Connect the Dock to the AC power adapter and an electrical outlet
2. Connect the USB cable from your computer to the Dock
3. Insert an HDD into the Dock while depressing the hinged door. Check for proper alignment with the drive connector.
4. Depress the ON/OFF button on the Dock rear panel. Check that the blue LED is lit.
5. The computer should immediately detect the Dock USB connection, download any necessary USB drivers, and mount the drive.
6. Partition and format the drive as needed

#### IMPORTANT NOTES:

- A new HDD must be initialized before your computer will recognize the drive
- Do not move the dock while reading or writing files
- Turn off the power and hold the Dock securely while removing the drive

### 3.3 Initializing, Formatting, or Partitioning an HDD in Windows OS

- 1) Insert a drive and turn on the Dock
  - 2) Check that the blue LED is lit on the Dock
  - 3) Connect the USB cable to the computer
  - 4) Initialize a new drive so the computer will recognize it
  - 5) Open the Disk Management utility to partition and format the drive
- Win 7: Control Panel > Administrative Tools > Computer Management > Disk Management
  - Win 8/8.1/10: Search **Create and format hard disk partitions**

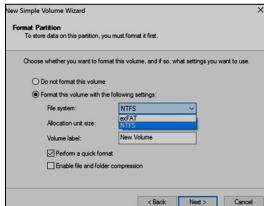
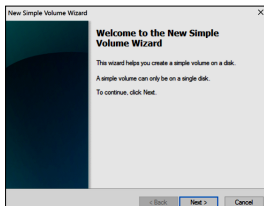


- Click **OK** to initialize a new drive
- Select the **external** HDD (NOT the internal computer HDD)
- Right-click on the **Unallocated** portion and select the **New Simple Volume**
- Follow the wizard instructions. Most applications can use the default settings

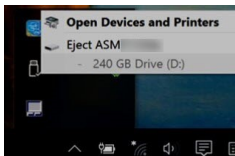
Use the **Simple Volume Wizard** to perform the following functions:

- \* Partition a drive
- \* Change the drive letter
- \* Delete a partition
- \* Format a drive
- \* Shrink a partition
- \* Change a drive file system type

Right-click on the **Unallocated** area and select **New Simple Volume**



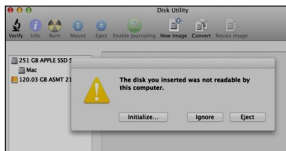
- Follow the instructions from the New Simple Volume wizard
- Use the default menu choices when uncertain
- Select the **exFAT** file system to share the HDD with a Mac computer
- A notification window will list the successful operations. Click **Finish**.
- The drive should now appear as **Healthy** in the Disk Management menu
- Open **File Explorer** to access the drive to transfer files
- Use the **Safely Remove** icon from the taskbar or the notification area before removing the HDD from the Dock



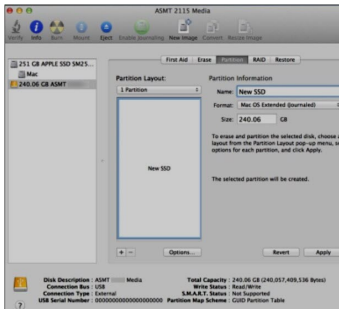


### 3.4 Initializing, Formatting, or Partitioning an HDD in Mac OS

- 1) Insert a drive and turn on the Dock
- 2) Check that the blue LED is lit on the Dock
- 3) Connect the USB cable to the computer
- 4) Initialize the drive, if prompted
- 5) Open Utilities > Disk Utility > Select the HDD drive



- 6) Click the **Partition** tab
- 7) Select a Partition scheme. **GUID** is the most common.
- 8) Enter the **Partition** size and name to format the drive
- 9) Select the drive format (**ExFat** can share with Windows OS)
- 10) Click the **Eject** button on the menu before removing the drive



### **3.5 Troubleshooting Notes**

**No Power:**

- Check the AC power adapter. Press the ON/OFF button

**Cannot read the HDD:**

- Ensure that the HDD is properly seated and the blue LED on the Dock is lit
- Initialize a new drive for the computer to recognize it
- Test the drive with another dock or enclosure, if possible
- Try a different USB cable, if possible
- Reformat the drive if possible (all data will be lost)

**Slow file transfer:**

- Check that the computer host port supports USB 3.0

**My computer does not recognize the adapter:**

- Check the web site of your computer manufacturer for updated USB drivers

Windows: Search Device Manager > Storage controllers > USB Attached SCSI (UAS)  
Mass Storage Device

- Right-click on the drive and check for updated drivers

Mac: System Information > USB > USB 3.0 Bus ASMT1153e

**Dock has stopped responding**

- Check that the computer is not in sleep mode
- Disconnect the Dock and reboot your computer

Contact **support@cablematters.com** with a description of your hardware configuration and your computer OS

#### 4. TECHNICAL SPECIFICATIONS

HDD Support:	SATA I (1.5 Gbps), II (3 Gbps), III (6 Gbps) Hard Drives 2.5" and 3.5" SSD/HDD/SSHD
External Interface:	USB 3.0 Type-B female
Drive Connector:	SATA Data & Power Combo (7+15 pin) Receptacle
Included Cables:	1 x USB 3.0 Type-A to Type-B 1 x USB 3.1 Type-C to Type-B
OS Support USB Host:	Windows 7, 8, 8.1, 10 Mac OS 10.4 and above
Certifications:	FCC, CE, RoHS
Power Adapter I/O:	100-240 VAC, 50/60Hz /12v DC, 2000mA
Dock LED Indicator:	Blue / Power and Data Transfer
Dock Housing (LxWxH)	5.0 x 2.9 x 2.2 Inches
Dock Weight	8.7 Ounces
Warranty:	Limited One-Year

Note: Specifications are subject to change without notice

## 5. Warranty and Support

### 5.1 Customer Support and Contact Information

Cable Matters offers lifetime technical support as an integral part of our commitment to provide industry leading solutions.

Email us with any questions at [support@cablematters.com](mailto:support@cablematters.com).

### 5.2 Warranty Information

This product is backed by a limited one-year warranty. The warranty covers parts and labor costs only. Cable Matters does not warrant its products from defects or damages arising from misuse, abuse, or normal wear.

### 5.3 Limitation of Liability

In no event shall Cable Matters Inc. (including their officers, directors, employees or agents) be liable for any damages (whether direct or indirect, special, punitive, incidental, consequential, or otherwise), loss of profits, loss of business, or any pecuniary loss, arising out of, or related to the use of this product exceeding the actual price paid for the product (as allowed by state law).

**View our other USB 3.0 products at [www.cablematters.com](http://www.cablematters.com)**



**HDD Dock & Clone Station  
Model 202014**



**USB 3.0 to SATA Adapter  
Model 202041**



**Ultra-Mini USB 3.0 Hub  
Model 202045**